

5

Labor Availability

FOR RADII

Contents

3 **OVERVIEW**

4 **SKILLS AND OCCUPATIONS**

Corner of Ridge Rd/Minooka Rd in Grundy County / 5

200 E. Court St., Kankakee, IL in Kankakee County / 7

Exit 318 on I-57 @ N6000 Rd, Bourbonnais, IL in Kankakee County / 9

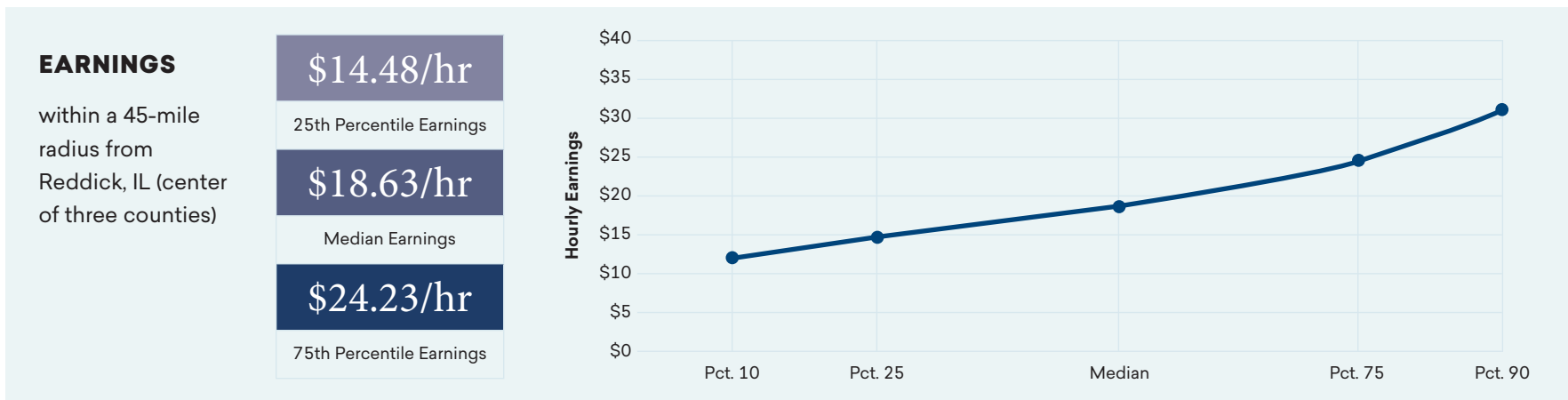
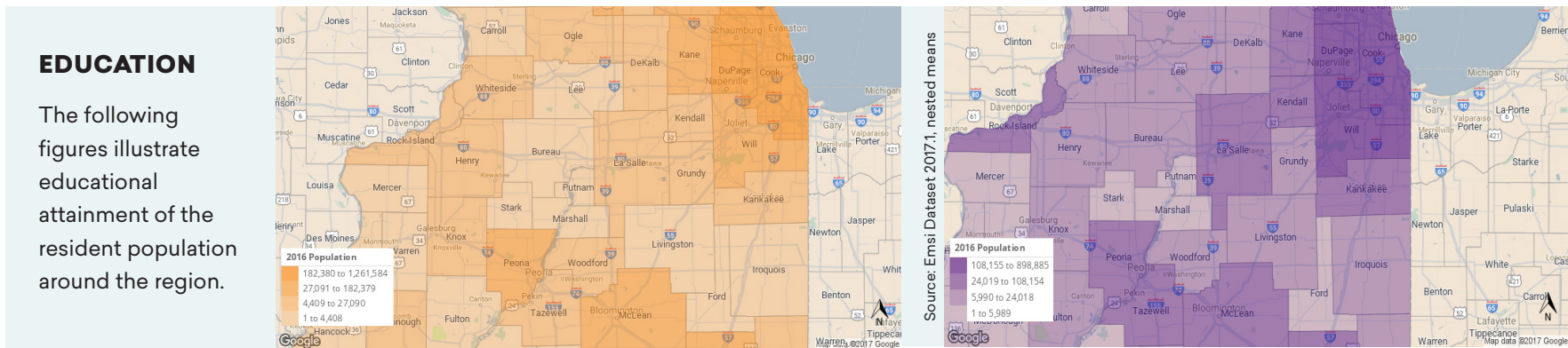
112 W. Madison St, Pontiac, IL in Livingston County / 11



Overview

FIGURE 1. Population who have earned a Bachelor's Degree or Higher

FIGURE 2. Population who have Some College or earned an Associates Degree



Skills and Occupations

To analyze the current skills and occupations of the people residing within an area, we used data from the Census LEHD program coupled with Census' new Longitudinal Origin-Destination Employment Statistics (LODES) program and is then matched with occupational data using staffing patterns. Available workforce are where workers live in comparison to where they work.

Each location has two tables and three figures. The first table provides a breakdown of the top five occupations filled by residents of the given area. In many instances, the top five occupations are the same for each radii. The second table provides a list of the top skills associated with the top occupations using O*Net's standardized crosswalk and scale. The figures illustrate the concentration of jobs compared to net commuters. Net commuters are the minimum number of workers who commute in or out of the region to satisfy the regional numbers of jobs held (shown in GREEN on the Net Commuter maps). A positive number describes commuters entering a region, while a negative number (shown in RED) describes commuters leaving a region.

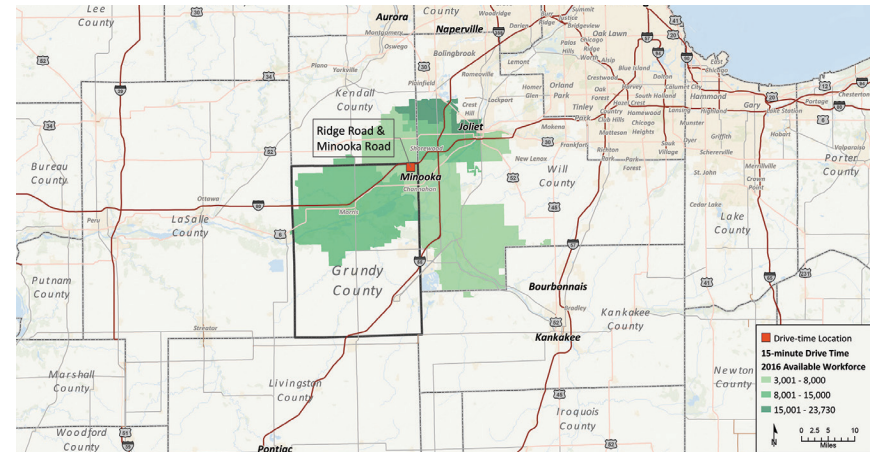
CORNER OF RIDGE RD/MINOOKA RD IN GRUNDY COUNTY

The type of occupations does not change from the different drive times. A large share of available workers leave the area for work. However, the number of net commuters do not change very much at the 30- and 45-minute drive time ranges indicating that the further away from the corner of Ridge Rd and Minooka Rd in Grundy County, the more residents from outlying areas (such as Chicago) commute within the area or residents have more opportunities to stay in the area for work.

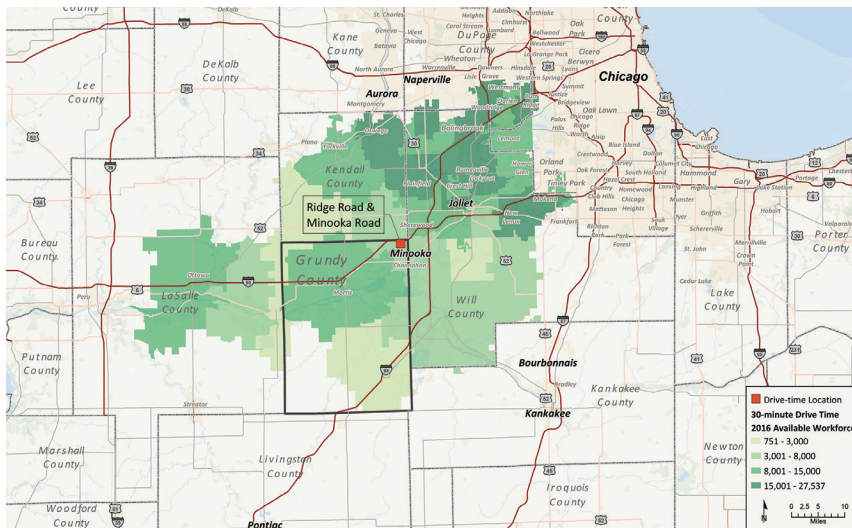
TABLE 1. Summary

	AVAILABLE WORKFORCE	JOBS	MEDIAN EARNINGS
15-minutes	136,576	98,891	\$20.33
30-minutes	489,410	347,480	\$20.69
45-minutes	1,518,131	1,377,958	\$21.88

15-MINUTE



30-MINUTE



45-MINUTE

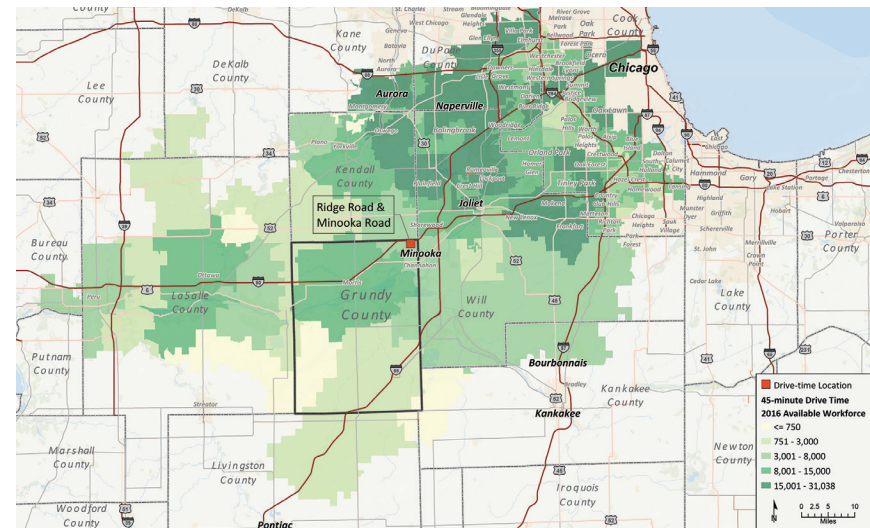


TABLE 2. Top 5 Occupations by Available Workforce, Corner of Ridge Rd/Minooka Rd in Grundy County

SOC	OCCUPATION DESCRIPTION	AVAILABLE WORKFORCE	% OF TOTAL AVAILABLE WORKFORCE	JOBS	ANNUAL OPENINGS	MEDIAN HOURLY WAGE
15-MINUTE						
41-2031	Retail Salespersons	4,688	3.4%	4,194	270	\$10.37
53-7062	Laborers and Freight, Stock, and Material Movers, Hand	4,148	3.0%	3,345	245	\$10.62
41-2011	Cashiers	3,178	2.3%	2,958	197	\$9.35
43-9061	Office Clerks, General	3,114	2.3%	2,116	89	\$13.77
35-3021	Combined Food Preparation and Serving Workers, Including Fast Food	2,917	2.1%	2,396	149	\$8.80
30-MINUTE						
41-2031	Retail Salespersons	16,258	3.3%	12,883	818	\$10.38
53-7062	Laborers and Freight, Stock, and Material Movers, Hand	13,561	2.8%	11,196	751	\$11.01
43-9061	Office Clerks, General	11,242	2.3%	7,310	313	\$13.95
41-2011	Cashiers	10,676	2.2%	9,429	628	\$9.26
35-3021	Combined Food Preparation and Serving Workers, Including Fast Food	9,640	2.0%	8,128	496	\$8.84
45-MINUTE						
41-2031	Retail Salespersons	47,981	3.2%	48,762	2,430	\$10.77
53-7062	Laborers and Freight, Stock, and Material Movers, Hand	41,667	2.7%	42,640	2,381	\$11.51
43-9061	Office Clerks, General	35,059	2.3%	29,978	1,060	\$14.71
41-2011	Cashiers	31,816	2.1%	31,523	1,826	\$9.50
35-3021	Combined Food Preparation and Serving Workers, Including Fast Food	29,913	2.0%	29,245	1,590	\$9.14

TABLE 3. Top Skills of Available Workforce, Corner of Ridge Rd/Minooka Rd in Grundy County

TOP SKILLS OF AVAILABLE WORKFORCE
Customer and Personal Service
Sales and Marketing
English Language
Mathematics
Transportation
Mechanical
Customer and Personal Service
Mathematics
English Language
Clerical
Customer and Personal Service
English Language



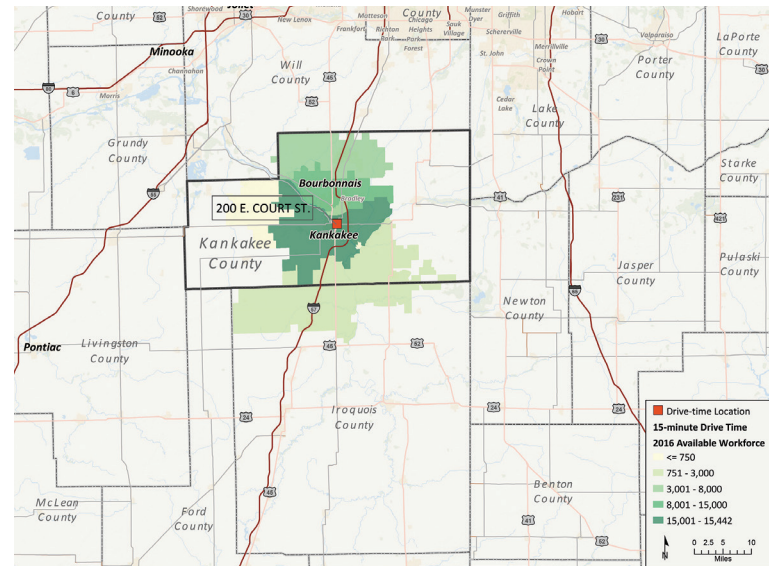
200 E. COURT ST., KANKAKEE, IL IN KANKAKEE COUNTY

The type of occupations does not change from the different drive times. Many available workers leave the area for work and that number grows as the drive time increases.

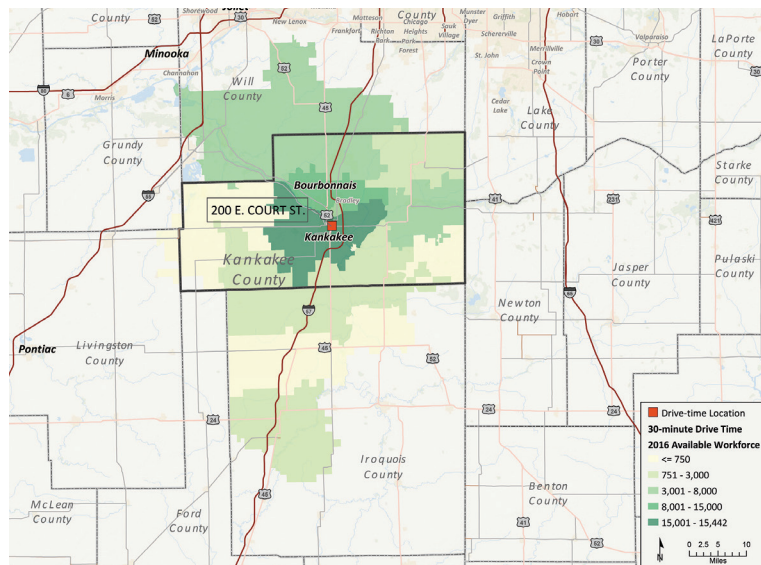
TABLE 4. Summary

	AVAILABLE WORKFORCE	JOBS	MEDIAN EARNINGS
15-minutes	45,949	39,801	\$19.26
30-minutes	75,008	55,740	\$19.22
45-minutes	203,882	145,153	\$20.03

15-MINUTE



30-MINUTE



45-MINUTE

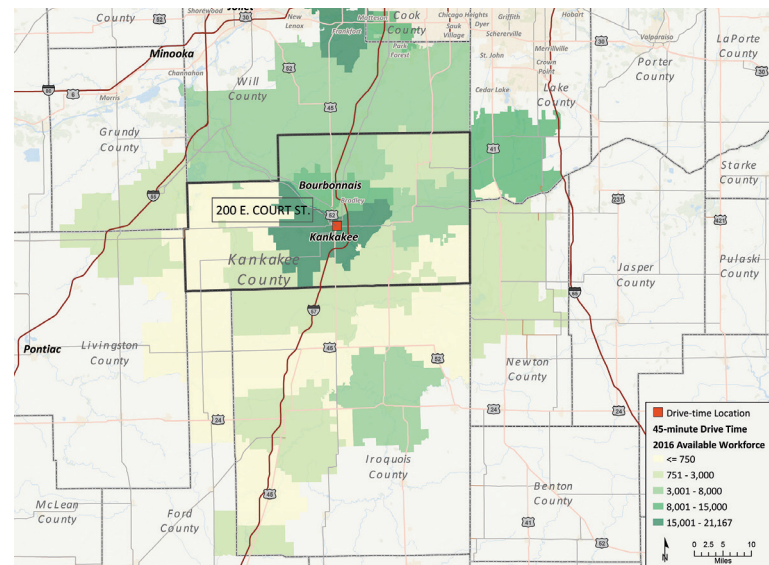


TABLE 5. Top 5 Occupations by Available Workforce, 200 E. Court St., Kankakee, IL in Kankakee County

SOC	OCCUPATION DESCRIPTION	AVAILABLE WORKFORCE	% OF TOTAL AVAILABLE WORKFORCE	JOBS	ANNUAL OPENINGS	MEDIAN HOURLY WAGE
15-MINUTE						
41-2031	Retail Salespersons	1,599	3.5%	1,544	77	\$9.87
41-2011	Cashiers	1,230	2.7%	1,166	83	\$9.13
43-9061	Office Clerks, General	1,163	2.5%	1,177	50	\$14.11
29-1141	Registered Nurses	1,141	2.5%	1,230	54	\$30.59
53-7062	Laborers and Freight, Stock, and Material Movers, Hand	1,059	2.3%	600	33	\$13.22
30-MINUTE						
41-2031	Retail Salespersons	2,460	3.3%	1,765	92	\$9.89
41-2011	Cashiers	1,977	2.6%	1,546	109	\$9.17
43-9061	Office Clerks, General	1,887	2.5%	1,539	66	\$14.01
53-7062	Laborers and Freight, Stock, and Material Movers, Hand	1,797	2.4%	947	59	\$12.74
29-1141	Registered Nurses	1,707	2.3%	1,399	65	\$30.45
45-MINUTE						
41-2031	Retail Salespersons	6,387	3.1%	4,500	240	\$10.22
41-2011	Cashiers	4,985	2.4%	4,048	269	\$9.21
43-9061	Office Clerks, General	4,868	2.4%	3,499	138	\$13.97
53-7062	Laborers and Freight, Stock, and Material Movers, Hand	4,840	2.4%	2,881	176	\$11.69
29-1141	Registered Nurses	4,335	2.1%	2,588	133	\$30.56

TABLE 6. Top Skills of Available Workforce, 200 E. Court St., Kankakee, IL in Kankakee County

TOP SKILLS OF AVAILABLE WORKFORCE
Customer and Personal Service
Sales and Marketing
Clerical
English Language
Mathematics
Psychology
Transportation
Therapy and Counseling
Mechanical



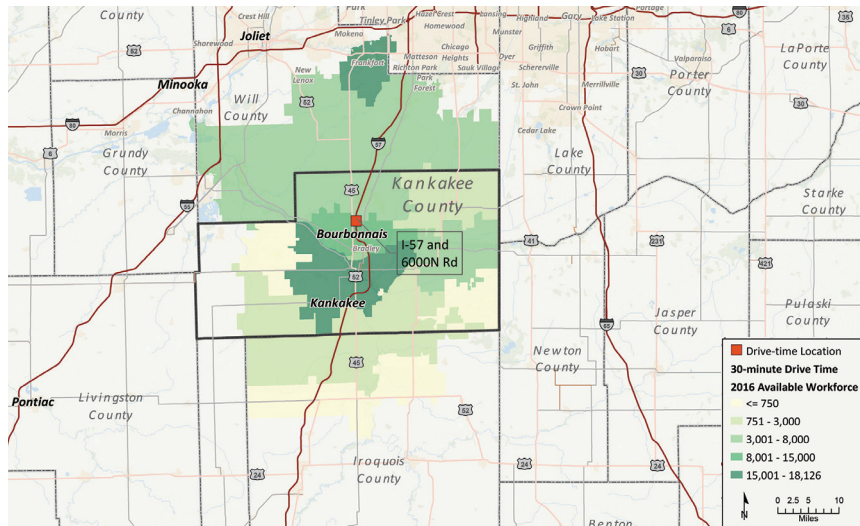
EXIT 318 ON I-57 @ N6000 RD, BOURBONNAIS, IL IN KANKAKEE COUNTY

The type of occupations does not change from the different drive times. A smaller share of available workers leave the area for work than some of the other locations in this report. Although the share jumps from the 15- to 30-minute drive times, it drops the further away.

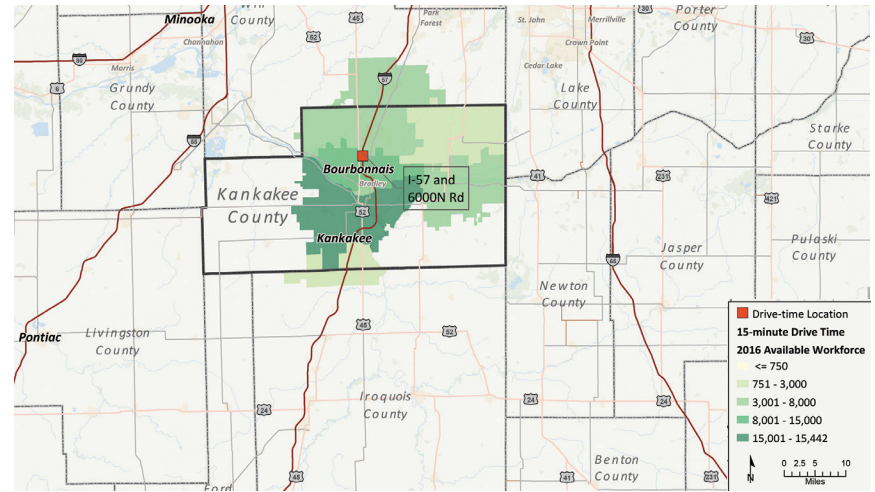
TABLE 7. Summary

	AVAILABLE WORKFORCE	JOBS	MEDIAN EARNINGS
15-minutes	49,565	44,692	\$19.25
30-minutes	107,092	79,405	\$19.75
45-minutes	434,093	343,760	\$21.58

30-MINUTE



15-MINUTE



45-MINUTE

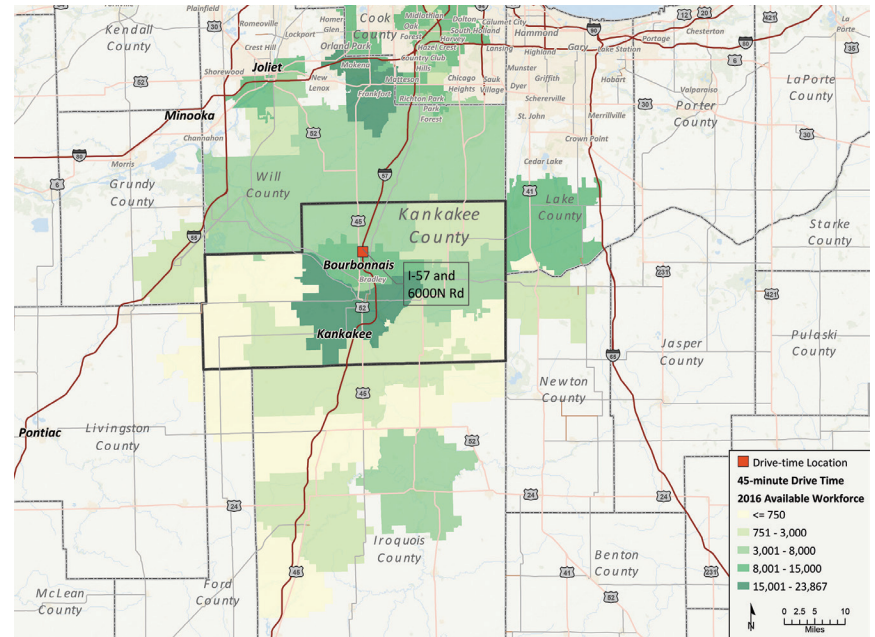


TABLE 8. Top 5 Occupations by Available Workforce, Exit 318 on I-57 @ N6000 Rd, Bourbonnais, IL in Kankakee County

SOC	OCCUPATION DESCRIPTION	AVAILABLE WORKFORCE	% OF TOTAL AVAILABLE WORKFORCE	JOBS	ANNUAL OPENINGS	MEDIAN HOURLY WAGE
15-MINUTE						
41-2031	Retail Salespersons	1,701	3.4%	1,604	80	\$9.87
41-2011	Cashiers	1,315	2.7%	1,237	87	\$9.12
43-9061	Office Clerks, General	1,242	2.5%	1,290	55	\$14.10
29-1141	Registered Nurses	1,197	2.4%	1,313	60	\$30.61
53-7062	Laborers and Freight, Stock, and Material Movers, Hand	1,162	2.3%	724	41	\$13.11
30-MINUTE						
41-2031	Retail Salespersons	3,459	3.2%	2,332	123	\$9.97
41-2011	Cashiers	2,638	2.5%	2,132	149	\$9.09
43-9061	Office Clerks, General	2,606	2.4%	2,147	89	\$14.05
53-7062	Laborers and Freight, Stock, and Material Movers, Hand	2,584	2.4%	1,524	95	\$11.93
29-1141	Registered Nurses	2,342	2.2%	1,501	71	\$30.79
45-MINUTE						
41-2031	Retail Salespersons	13,643	3.1%	9,149	458	\$10.59
53-7062	Laborers and Freight, Stock, and Material Movers, Hand	10,411	2.4%	8,452	477	\$11.38
41-2011	Cashiers	10,040	2.3%	8,235	494	\$9.42
43-9061	Office Clerks, General	10,009	2.3%	7,679	263	\$14.58
29-1141	Registered Nurses	9,964	2.3%	9,101	358	\$34.01

TABLE 9. Top Skills of Available Workforce, Exit 318 on I-57 @ N6000 Rd, Bourbonnais, IL in Kankakee County

TOP SKILLS OF AVAILABLE WORKFORCE
Customer and Personal Service
Clerical
Psychology
Sales and Marketing
Mathematics
Therapy and Counseling
English Language
Transportation
Mechanical



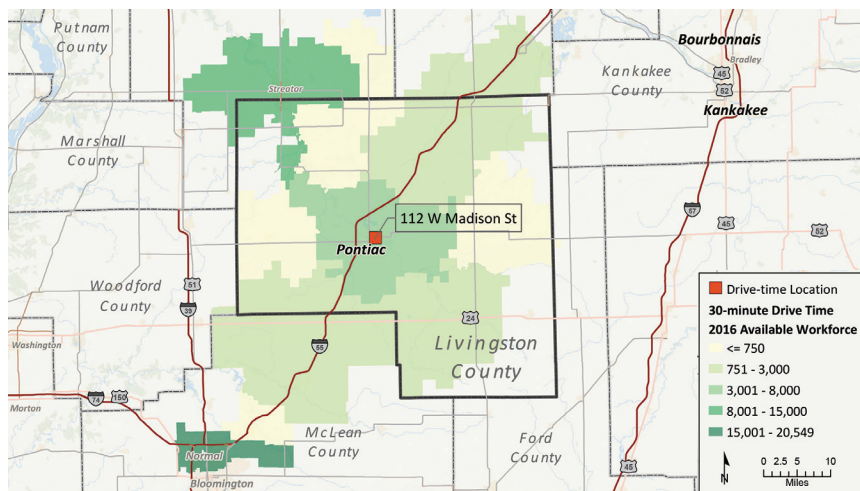
112 W. MADISON ST, PONTIAC, IL IN LIVINGSTON COUNTY

This more rural position differs from all other locations. The types of occupations change slightly from the different drive times and there are more workers who commute into the area than leave within a 15-minute radius. The share of net commuters leaving the area jump once at the 30-minute drive time and drops by 45-minutes.

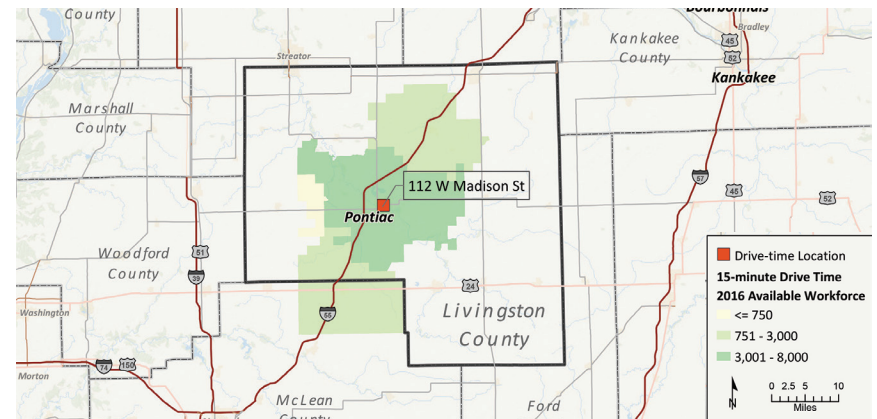
TABLE 10. Summary

	AVAILABLE WORKFORCE	JOBS	MEDIAN EARNINGS
15-minutes	8,605	8,817	\$18.64
30-minutes	52,478	43,370	\$19.11
45-minutes	152,887	139,685	\$21.16

30-MINUTE



15-MINUTE



45-MINUTE

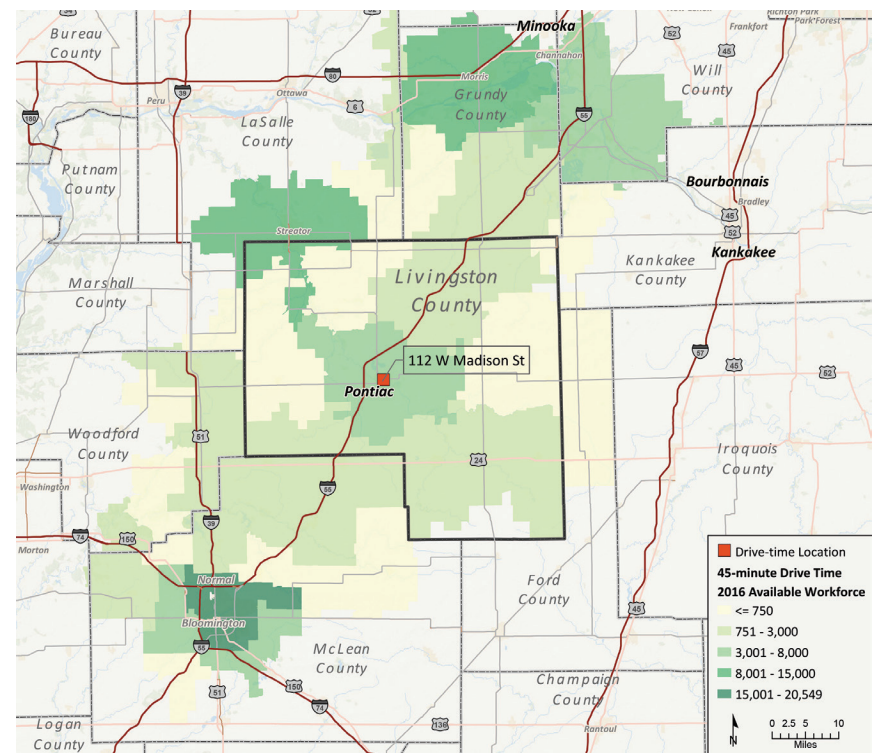


TABLE 11. Top 5 Occupations by Available Workforce, 112 W. Madison St, Pontiac, IL in Livingston County

SOC	OCCUPATION DESCRIPTION	AVAILABLE WORKFORCE	% OF TOTAL AVAILABLE WORKFORCE	JOBS	ANNUAL OPENINGS	MEDIAN HOURLY WAGE
15-MINUTE						
11-9013	Farmers, Ranchers, and Other Agricultural Managers	287	3.3%	298	13	\$14.93
41-2031	Retail Salespersons	241	2.8%	200	11	\$10.62
41-2011	Cashiers	223	2.6%	205	13	\$9.46
43-9061	Office Clerks, General	199	2.3%	180	6	\$14.38
29-1141	Registered Nurses	193	2.2%	310	13	\$28.45
30-MINUTE						
41-2031	Retail Salespersons	1,527	2.9%	1,539	78	\$9.94
41-2011	Cashiers	1,284	2.4%	1,296	78	\$9.41
43-9061	Office Clerks, General	1,248	2.4%	853	36	\$14.21
35-3021	Combined Food Preparation and Serving Workers, Including Fast Food	1,218	2.3%	1,362	75	\$9.04
43-4051	Customer Service Representatives	1,084	2.1%	565	38	\$14.54
45-MINUTE						
41-2031	Retail Salespersons	4,364	2.9%	4,225	220	\$10.14
43-9061	Office Clerks, General	3,584	2.3%	3,127	134	\$14.09
43-4051	Customer Service Representatives	3,550	2.3%	3,017	163	\$14.30
41-2011	Cashiers	3,489	2.3%	3,437	213	\$9.56
35-3021	Combined Food Preparation and Serving Workers, Including Fast Food	3,355	2.2%	3,274	186	\$9.00

TABLE 12. Top Skills of Available Workforce, 112 W. Madison St, Pontiac, IL in Livingston County

TOP SKILLS OF AVAILABLE WORKFORCE
Production and Processing
Customer and Personal Service
Clerical
Biology
Sales and Marketing
Therapy and Counseling
Computers and Electronics
Mathematics
English Language

